

KULLEĠĠ SAN BENEDITTU

Boys' Secondary, Kirkop

HALF-YEARLY EXAMINATION – 2012/2013

FORM 4

ART

TIME: Extended

Instructions to students

1. Read the questions carefully and consider which of them will be suitable for your competence and interest
2. You are expected to show that your work goes through the process of **Investigation, Documentation, Experimentation and Realisation.**
3. **Preliminary studies** are required to answer **Section A**. Therefore preliminary studies are to be handed in with your final work. Failure to do so will lose you marks.
4. Any option selected from under **Section A** can be interpreted in any one of the following forms:
 - a. Painting in colour;
 - b. Print making;
 - c. Textiles;
 - d. Collage;
 - e. Three-dimensional work
5. Any reference material (primary or secondary sources) may be used.
6. Copying is unacceptable and not tolerated in any form.
7. Provide the following information clearly on the back of your work:
 - a. Name and surname;
 - b. School and Class; and
 - c. The Section and the number of the selected option.

Section A

Drawing or Painting from Observation

A selection of objects is arranged before you to study. Preliminary studies will help you understand the organization of **light and shadow, forms, colour** and **textures** of the objects. Produce a painting or drawing of the group.

Section B

Consider the following starting points:

1. The Boat Yard

2. The Garden (Fig.1)

3. Surrealism

Surrealism depicts nature in a dream like manner making use of things more real than reality itself. Produce a surrealist composition with reference to a Maltese landscape. (Fig.2)

YOU ARE REMINDED THAT YOU WILL BE ASSESSED ON YOUR ABILITY TO:

- (i) **Record** responses to direct experience, observation, and imagination;
- (ii) **Develop ideas and investigate** visual and other sources of information;
- (iii) Explore and use a **range of media**;
- (iv) Review, modify, refine and **complete your work**; and
- (v) **Respond** to the works of other artists, craft persons and designers, **making connections** with your own work.



Figure 1

Claude Monet – *Water lily pool*

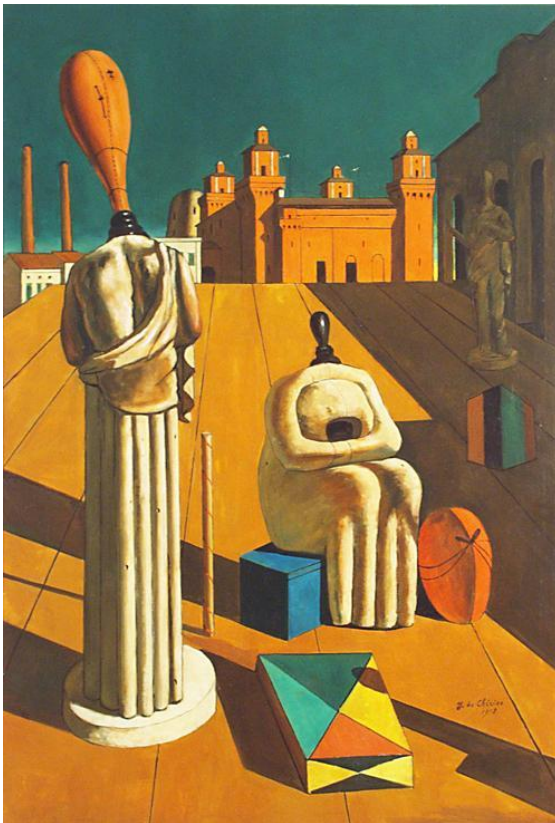


Figure 2

Giorgio De Chirico – *The Disquieting Muses*